

1947

SERIES

Car Distribution Department
Bulletins

INDEX

- DL-22 - 1946-1947 Car Prices and Models
- DL-23 - 1946-1947 Car Prices & Models - Revised
- DL-24 - Shipping Weights 1946 & 1947 Models - Revised
- DL-25 - Aluminum Cylinder Head - 8 Cylinder Models
- DL-27 - New Green Colors
- DL-28 - Caravan Top for Cab Pickup
- DL-29 - New Color Options
- DL-30 - Current Prices & Options - 1947 Models
- DL-31 - Front Bumpers for Model 178 - Option Z
- DL-33 - Prices of Cars & Options - 1947 Models
- DL-35 - New Prices Convertibles & Cab Pickups
- DL-37 - White Side Wall Tires
- DL-38 - Correction to Bulletin DL-37
- DL-39 - New Blue Colors
- DL-41 - White Sidewall Tires
- DL-42 - Prices of Cars & Options - 1947 Models, Rev.



Car Distribution Department Bulletin

Number
DL-22

Date
12-16-46

Subject

CAR PRICES
1946 AND
1947 MODELS

1. List
Prices,
etc.

TO ALL DEALERS:

1. Effective on all cars or delivered from the factory after December 16, 1946 the following are the new factory at Detroit list prices, factory handling charge, and provision for federal tax expense on 1946 and 1947 model Hudson cars; (these prices include extra tire and tube):

Model & Body Type	Car List	Factory Handling Charge	Provision for Federal. Tax Expense
HUDSON SUPER SIX - (51 and 171)			
Brougham	\$ 1425.00	\$ 4.50	\$ 80.75
4-door Sedan	1467.00	4.50	82.75
3-pass. Coupe	1396.00	4.50	79.25
Club Coupe	1465.00	4.50	82.75
Convertible Brougham	1775.00	4.50	98.50
Chassis	1103.00	4.50	64.25
HUDSON COMMODORE SIX - (52 and 172)			
4-door Sedan	1606.00	4.50	90.25
Club Coupe	1601.00	4.50	90.00
HUDSON SUPER EIGHT - (53 and 173)			
4-door Sedan	1569.00	4.50	88.00
Club Coupe	1566.00	4.50	87.75
Chassis	1163.00	4.50	67.25
HUDSON COMMODORE EIGHT - (54 and 174)			
4-door Sedan	1673.00	4.50	93.75
Club Coupe	1660.00	4.50	93.00
Convertible Brougham	1936.00	4.50	107.00
HUDSON COMMERCIAL CARS (58 and 178)			
Cab Pick-up	1269.00	4.50	56.25

(OVER)

Subject

- 4 -

1. List
Prices
etc.
(Cont'd)

Retail delivered prices should not exceed the sum of the following items:

List price of car
Optional equipment
Factory handling charge
Provision for federal tax expense
Actual transportation cost
State and local taxes Dealer conditioning charge
 \$20.00 on six cylinder models
 \$25.00 on eight cylinder models
 \$20.00 on commercial cars
Gasoline, oil and anti-freeze

2. Net
Prices
and
Option
Prices.

Changes will also be made, effective December 16, 1946 in the net prices of cars and in the list and net prices of certain options. Details will follow in a separate bulletin.

GHD:LB.

Geo. H. Dow

Manager,
Car Distribution.



Car Distribution Department Bulletin

Number DL-23
Date 12-20-46
Subject

CAR PRICES
1946 & 1947
MODELS

1. List Prices, etc.
2. Net Prices to Master Dealers

TO ALL MASTER DEALERS:

1. This bulletin supplements our bulletin DL-22 which shows the new list prices of the 1946 and 1947 models, effective December 16, 1946.
2. a) Effective on and after December 16, 1946 a distributor's net prices to his master dealers, f.o.b. factory at Detroit, for Hudson cars with standard equipment, should not exceed, the "Combined net price to Master Dealer at factory" shown below, plus applicable charges referred to in sub-paragraph (b) of this section.

<u>Model and Body Type</u>	<u>Net Price of Car</u>	<u>Factory Handling Charge</u>	<u>Provision For Federal Tax Expense</u>	<u>Combined Net Price to Master Dealer At Factory</u>
HUDSON SUPER SIX (51 & 171)				
Brougham	\$1089.69	\$ 4.50	\$80.75	\$1174.94
4-door Sedan	1121.55	4.50	82.75	1208.80
3-Pass. Coupe	1067.51	4.50	79.25	1151.26
Club Coupe	1119.65	4.50	82.75	1206.90
Convertible Brougham	1335.75	4-50	93.50	1458.75
Chassis	845.19	4.50	64.25	913.94
HUDSON COMMODORE SIX (52 & 172)				
4-door Sedan	1227.02	4.50	90.25	1321.77
Club Coupe	1223.61	4.50	90.00	1318.11
HUDSON SUPER EIGHT (53 & 173)				
4-door Sedan	1198.85	4.50	88.00	1291.35
Club Coupe	1196.49	4.50	87.75	1288.74
Chassis	890.37	4.50	67.25	962.12
HUDSON COMMODORE EIGHT (54 & 174)				
4-door Sedan	1277.91	4.50	93.75	1376.16
Club Coupe	1268.36	4.50	93.00	1365.86
Convertible Brougham	1478.27	4.50	107.00	1589.77
HUDSON COMMERCIAL CARS (58 & 178)				
Cab Pickup	970.71	4.50	56.25	1031.46

(OVER)

2. Net Prices
to Master
Dealers
(Cont'd)

(b) In addition to the above a charge of 25 may be included for a certificate of origin (if one is required); a charge may be made for anti-freeze supplied with the car, not to exceed applicable maximum prices; a charge of \$10.00 per car may be made for local cooperative advertising in accordance with authorizations given to each distributor by his master dealers; and a report card charge of \$5.00 per car may be made, which will be refunded or credited by the distributor to the master dealer on each of the automobiles sold at retail by the master dealer provided he furnishes, within 5 days after delivery, a Retail Delivery Report properly filled in.

(c) A distributor's charges to his master dealers on any car delivered to a master dealer out of the distributor's warehouse should not exceed \$10.00 to cover warehousing expense and \$3.50 to cover unloading and greasing expense. In addition a charge may be made for gasoline, oil and anti-freeze supplied by the distributor with the automobile, not to exceed applicable maximum prices.

3. Volume
Discounts
to Master
Dealers

3. (a) Hudson has announced to its distributors that, subject to the terms and conditions stated below, Hudson will allow and pay to or on behalf of each authorized Hudson distributor for the benefit of his authorized master dealers, volume discounts computed on the applicable amounts as provided for in sub-paragraph (b) below, based on the total quantity of new Hudson automobiles purchased from distributor and paid for by master dealer and shipped or delivered to master dealer during the period from October 1, 1946 to September 30, 1947 inclusive, in accordance with the retroactive volume discount percentage schedule set forth in sub-paragraph (c) of section 3 of Bulletin DL-13 (the only applicable volume discount percentage being the one set opposite the quantity bracket within which such total volume discount performance falls); -the foregoing being on the condition that such amount, if any, thus paid to distributor shall be passed on and paid forthwith by distributor to master dealer, and on the further condition that Hudson may if it so desires pay same for distributor directly to master dealer.

(b) For cars shipped or delivered from the factory prior to December 16, 1946 the volume discounts on cars purchased from distributor and paid for by master dealer as provided in sub-paragraph (a) of this section, shall be computed on the applicable amounts indicated in sub-paragraph (b) of section 3 of Bulletin DL-13, and sub-paragraph (b) of section 3 of Bulletin DL-19. For cars shipped or delivered from the factory on and after December 16, 1946 such volume discounts shall be computed on the base prices shown below:



Car Distribution Department Bulletin

Number
DL-23

Date
12-20-46

Subject

(1)	(2)
<u>Model & Body Type</u>	<u>Base Amounts on Cars Shipped or Delivered from the Factory on and after December 16, 1946.</u>
HUDSON SUPER SIX (5 & 171)	
Brougham	\$1398.00
4-door Sedan	1440.00
3-pass. Coupe	1369.00
Club Coupe	1437.00
Convertible Brougham	1748.00
Chassis	1076.00
HUDSON COMMODORE SIX (52 & 172)	
4-door Sedan	1578.00
Club Coupe	1574.00
HUDSON SUPER EIGHT (53 & 173)	
4-door Sedan	1541.00
Club Coupe	1538.00
Chassis	1135.00
HUDSON COMMODORE EIGHT (54 & 174)	
4-door Sedan	1645.00
Club Coupe	1633.00
Convertible Brougham	1909.00
HUDSON COMMERCIAL CARS (58 & 178)	
Cab Pickup	1241.00

3. Volume Discounts to Master Dealers (Cont'd)

(c) All terms and conditions set forth in sub-paragraphs (d) (e) (f) (g) and (h) of section 3 of Bulletin DL-13 shall be applicable in determining volume discounts under sub-paragraph (a) above; except that all references in those sub-paragraphs to September 30, 1946 shall be revised to read September 30, 1947 and all references to October 1, 1945 shall be changed to read October 1, 1946.

4. Effective on all cars shipped or delivered from the factory on and after December 16, 1946 the following are the new established f.o.b. factory at Detroit list prices on optional tire equipment. In establishing retail prices the "Provision for Federal tax expenses shown in column (4) may be added to the list prices. Distributor's net prices to master dealers for optional tire equipment, f.o.b. factory at Detroit, should not exceed the amounts shown in column (5), plus the "Provision for federal tax expense".

4. Prices of Optional Equipment

Prices and provision for federal tax expense on all other optional equipment remain as shown in current bulletins.

Subject

- 4 -

4. Prices
of
Optional
Equipment
(Cont'd)

(1)	(2)	(3)	(4)	(5)
<u>Option Letter</u>	<u>Option Name</u>	<u>List Price of Option</u>	<u>Provision for Federal tax Expense</u>	<u>Maximum Net Price to Master Dealer (Not Incl. Tax).</u>
<u>TIRE OPTIONS</u>				
A	5-15 x 6.50 - 4 Ply Tires, including large hub caps over 5-16 x 6.00 - 4 Ply tires (Models 51, 171 & 53, 173)	\$26.34	\$1.61	\$19.76
ATT	5-15 x 6.50 - 6 Ply Tires, including large hub caps over 5-16 x 6.00 - 4 Ply Tires - (Models 51, 171 & 53, 173)	50.20	3.90	37.65
TT	5-16 x 6.00 - 6 Ply Tires, over 5-16 x 6.00 - 4 Ply Tires (Models 51, 171 & 53, 173)	20.00	2.37	15.00
TT	5-15 x 6.60 - 6 Ply Tires, over 5-15 x 6.50 Ply Tires (Models 52, 172 & 54, 174)	23.86	2.29	17.90
EE	5-15 x 7.00 - 4 Ply Tires, including large hub caps over 5-15 x 6.00 - 4 Ply Tires, (Models 51, 171 & 53, 173)	38.99	3.57	29.24
EE	5-15 x 7.00 - 4 Ply tires, over 5-15 x 6.50 - 4 Ply Tires (Models 52, 172 & 54, 174)	12.64	1.96	9.48
EETT	5-15 x 7.00 - 6 Ply Tires, including large hub caps over 5-16 x 6.00 - 4 Ply Tires (Models 51, 171 & 53, 173)	65.91	6.17	49.03
EETT	5-15 x 7.00 - 6 Ply Tires, over 5-15 x 6.50 - 4 Ply Tires (Models 52, 172 & 54, 174)	39.57	4.56	29.68

5. Advertising
Charge

5. See sub-paragraph (b) in section 2 above.

6. Changes
in Prices,
etc.

6. All prices, charges and discounts in this Bulletin are subject to change as provided in the Supplement to your Hudson Distributor-Master Dealer Sales Agreement, which Supplement bears Form #10096.

7. Prior Price
Bulletins
Superseded.

7. This Bulletin supersedes our previous price bulletins insofar as they pertain to 1946 and 1947 model Hudson cars.

Geo. H. Dow

Manager,
Car Distribution.



Car Distribution Department Bulletin

Number
DL-24

Date
12-30-46

Subject

Shipping
Weights
1946 &
1947
Models
(Revised)

TO ALL MASTER DEALERS:

The following are the revised shipping and curb weights of all Passenger Car and Commercial Cab Pickup Models, effective, on all cars equipped on and after December 16, 1946. These weights include the spare (5th) tire and tube.

Model and Body Type	Overall Length (Inches)	Shipping Weight * (Pounds)	Curb Weight** (Pounds)
51 & 171 Brougham	207"	3055#	3200#
51 & 171 4-door Sedan	207"	3110#	3255#
51 & 171 3-pass. Coupe	207"	2975#	3120#
51 & 171 Club Coupe	207"	3040#	3185#
51 & 171 Convertible Brougham	207"	3220#	3365#
52 & 172 4-door Sedan	207"	3175#	3320#
52 & 172 Club Coupe	207"	3090#	3235#
53 & 173 4-door Sedan	207"	3260#	3420#
53 & 173 Club Coupe	207"	3210#	3370#
54 & 174 4-door Sedan	207"	3330#	3490#
54 & 174 Club Coupe	207"	3260#	3420#
54 & 174 Convertible Brougham	207"	3435#	3255#
58 & 178 Cab Pickup	214"	3110#	3265#

* Shipping weights do not include water, oil or gasoline.

** Curb weights include water, oil and 16-1/2 Gallons (full tank) of gasoline.

Weights of options, except for the addition of the (5th) spare tire and tube remain the same as listed in Bulletin DL-11, dated June 19th, 1946.

GHD:LB.

Geo. H. Dow
Manager,
Car Distribution.



Car Distribution Department Bulletin

Number
DL-25

Date
1-2-47

Subject

Aluminum
Cylinder
Head
(8 cyl.
Models)

TO MASTER DEALERS:

Aluminum Cylinder Heads, Option "N", for Eight Cylinder Models (173 & 174) will be available in production approximately January 20th, 1947.

Prices are as follows:

(1)	(2)	(3)	(4)	(5)
<u>Option Letter</u>	<u>Option Name</u>	<u>Price of Option</u>	<u>Provision List Federal Tax Expense</u>	<u>Maximum for Net Price to Master Dlr.**(Net Incl.Tax)</u>
"N"	Aluminum Cyl. Head	\$10.00	\$0.49	\$7.50

** In establishing retail prices and master dealer net prices, the "Provision for Federal Tax Expense" should be added to columns (3) and (5) respectively.

GHD:LB.

Geo. H. Dow
Manager,
Car Distribution.



Car Distribution Department Bulletin

Number

DL-27

Date

1-23-47

Subject

NEW
GREEN
COLORS

TO ALL MASTER DEALERS:

Effective with cars built on and after January 10th, 1947 there has been a change in our Green Colors.

These new Green Colors have more of a blue shade than the originals. Therefore, you will find they harmonize better with the interior of car.

There is also a considerable contrast between the new Green Colors which will make the two-tone paint much more attractive than in the past.

New Greens are as follows:

Option	Color Name
P	Palace Green - (Dark)
S	Sherwood Green - (Light)
SP	Sherwood Green lower - Palace Green upper.

GHD:LB.

Geo. H. Dow
Manager,
Car Distribution.



Car Distribution Department Bulletin

Number

DL-28

Date

2/5/47

Subject

CARAVAN TOP
(For Cab
Pickup)

TO ALL MASTER DEALERS:

A canvas top mounted on a sturdy aluminum frame, manufactured by the C. K. Turk Corporation, South Bend, Ind. is now available for the 1946-47 Cab Pickup Models. Full description and specifications are shown on attached insert.

This unit is available through all leading Automotive Jobbers, and is priced at \$122.50 less 25% in single lots, or 33-1/3% in lots of six or more.

Orders may be placed with your local Jobber - specify "Caravan Top Model 94-H", or address C. K. Turk Corporation, 1122 Mishawaka Avenue, South Bend, Indiana.

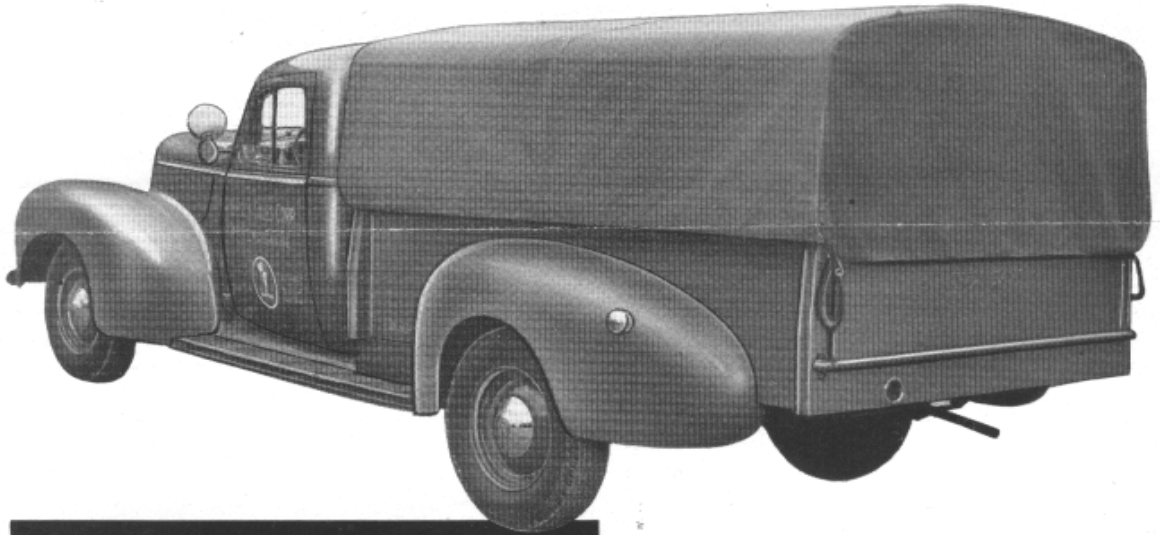
GHD:LB.

Geo. H. Dow
Manager
Car Distribution.

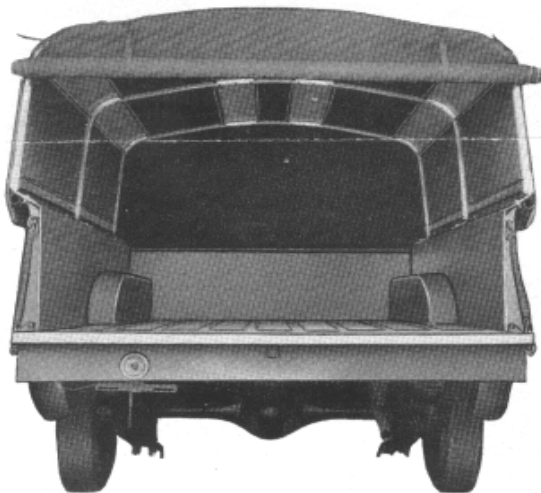
CARAVAN TOP

FRAME AND COVER FOR HUDSON COMMERCIAL CAB PICKUP

This great new idea in covers increases the usefulness of the Hudson Cab Pickup at least 75%; allows for most of the advantages of the "panel" plus the utility of the pickup.



**STURDY FRAME
WEATHER-RESISTANT COVER**



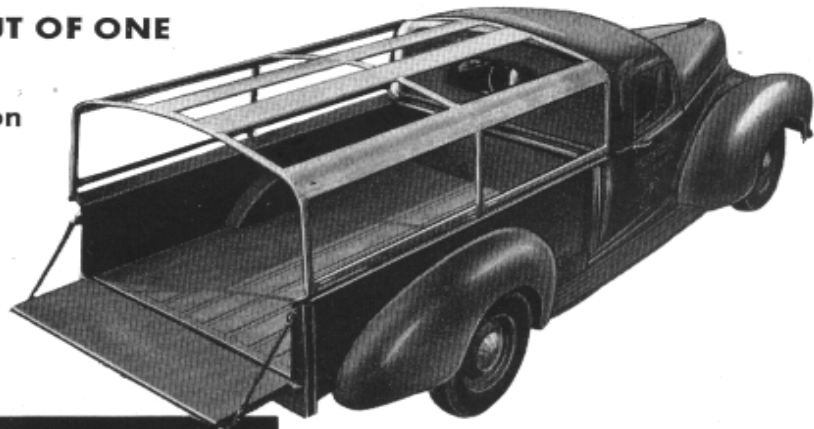
MAKES PICKUPS "CONVERTIBLE"

Here is the lightweight but ruggedly-built, all-aluminum frame and heavy duck cover for Hudson Cab Pickups that operators have wanted for years. It is Caravan Top, a C. K. Turk Corp. product, that will withstand hardest delivery usage under all kinds of weather conditions and is rigidly constructed to insure trouble-free, rattle-proof operation. Caravan Top is removed and replaced easily. It attaches to the body with only six bolts.

CARAVAN TOP

MAKES TWO TRUCKS OUT OF ONE

- Weather-tight cover
- Simple, strong construction
- Rigid and sturdy
- Lightweight
- Easily assembled
- Minimum vibration
- On or off in a jiffy



CARAVAN TOP'S FRAME

Caravan Top is extremely sturdy yet lightweight and easily handled, being constructed of high tensile, rustproof aluminum alloy. Frame consists of 3 one-piece aluminum channel bows, 4 supporting slats and 2 tie-slats. Longitudinal supporting slats have wide, smooth contours with rolled edges for additional strength. Bows and tie-slats are one-piece aluminum channel. Has no sharp projections or points to damage cover . . . every part is precision-built to allow complete

interchangeability, a factor for quick, easy assembly. Elastic stop nuts provide positive-fastening to eliminate loosening and vibration. Functionally designed to permit smooth flow of air over cab and top, thereby minimizing wind drag. Exclusive adjustable tie-down plates (an integral part of frame and do not require fastening to truck) allow for exact cover adjustment to assure snug, trim fit and water-tightness at flare-board.

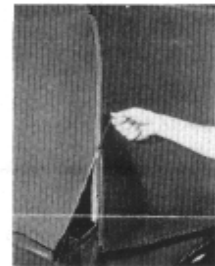
Caravan Top Model 94-H.....For Hudson Commercial Cab Pickup 1946-7
(There is 3 feet 9 inches clearance in height from floor. Also models with approximately 5 and 6 feet clearance.)

CARAVAN TOP'S COVER

Caravan Top has a heavy-duty, water and mildew resistant cover of long-wearing No. 10 duck (14.73 oz. before treating). Its sleek, smooth surface with welt-edge and slide fastener closures give a tailored appearance. Simple D-rings and hooks hold curtains in rolled position when desired; no cumbersome ropes or straps mar Caravan Top's beauty. Company identification easily lettered on sides. Two husky slide fasteners on both sides of back make for quick, easy opening and closing.

Caravan Top is shipped "knocked down" in this carton. It is easily assembled; directions are enclosed in box.

Slide fasteners on end curtain make for easy opening and tailored appearance.



This is the way Caravan Top is delivered to you. Packed one complete unit to a box. Net weight of Caravan Top is 55 pounds; gross weight 65 pounds



AVAILABLE FROM LEADING AUTOMOTIVE JOBBERS



MEG. BY C. K. TURK CORPORATION • SOUTH BEND, IND.



Car Distribution Department Bulletin

Number DL-29
Date 2-20-47
Subject NEW COLOR OPTIONS RELEASED

TO ALL MASTER DEALERS:

Effective at once Option "CC" red color, and "QK" Two Tone, Black above belt line and Quaker Grau below, in production on all Model and Body types excepting Model 178 Cab Pickup.

Prices are as follows:

(1)	(2)	(3)	(4)	(5)
<u>Option Letter</u>	<u>Option Name</u>	<u>List Price of Option*</u>	<u>Provision for Federal Tax Expense</u>	<u>Maximum Net Price to Master Dlr.* (Not incl. Tax)</u>
CC	Royal Red - Color	\$21.50	\$1.05	\$16.13
QK	Two Tone - Gray & Black	17.16	.84	12.87

* In establishing retail prices and master dealer net prices, the "Provision for Federal Tax Expense should be added to columns (3) and (5) respectively.

Geo. H. Dow
Manager,
Car Distribution.

GHD:LB.



Car Distribution Department Bulletin

Number
DL-30

Date
3-5-47

Subject

CURRENT
PRICES
CARS AND
OPTIONS
1947 MODELS

1. List
Prices,
Cars.

TO ALL MASTER DEALERS:

To provide ready reference to current list and net prices of all 1947 Models and Options, we show below prices listed in current bulletins.

1. Effective on all cars shipped or delivered from the factory on and after December 16, 1946 the following are the established f.o.b. factory at Detroit list prices, handling and provision for federal tax expense on 1947 model Hudson cars:

Model Body Type	Factory Car Handling List	Provision For Federal Charge Tax Expense	
HUDSON SUPER SIX (171)			
Brougham	\$1425.00	\$ 4.50	\$80.75
4-door Sedan	1467.00	4.50	82.75
3-Pass. Coupe	1396.00	4.50	79.25
Club Coupe	1465.00	4.50	82.75
Convertible Brougham	1775.00	4.50	98.50
Chassis	1103-00	4.50	64.25
HUDSON COMMODORE SIX (172)			
4-door Sedan	1606.00	4.50	90.25
Club Coupe	1601.00	4.50	90.00
HUDSON SUPER EIGHT (173)			
4-door Sedan	1569.00	4.50	88.00
Club Coupe	1566.00	4.50	87.75
Chassis	1163.00	4.50	67.25
HUDSON COMMODORE EIGHT (174)			
4-door Sedan	1673.00	4.50	93.75
Club Coups	1660.00	4.50	93.00
Convertible Brougham	1936.00	4.50	107.00
HUDSON COMMERCIAL CARS (178)			
Cab Pick-up	1269.00	4.50	56.25

(OVER)

1. List
Prices,
Cars,
(Cont'd)

Retail delivered prices should not exceed the sum of the following items:

List price of car
 Optional equipment
 Factory handling charge
 Provision for federal tax expense
 Actual transportation cost
 State and local taxes
 Dealer conditioning charge
 \$20.00 on six cylinder models
 \$25.00 on eight cylinder models
 \$20.00 on commercial cars
 Gasoline, oil and anti-freeze.

2. Net
Prices
to
Master
Dealer

2. (a) Effective on and after December 16, 1946 a distributor's net prices to his master dealers, f.o.b. factory at Detroit, for Hudson cars with standard equipment, should not exceed the "Combined Net Price to Master Dealer at Factory" shown below, plus applicable charge referred to in sub-paragraph (b) of this section.

<u>Model and Body Type</u>	<u>Net Price of Car</u>	<u>Factory Handling Charge</u>	<u>Provision For Federal Tax Expense</u>	<u>Combined Net Price to Master Dealer at Factory</u>
HUDSON SUPER SIX (171)				
Brougham	\$1089.69	\$4.50	\$80.75	\$1174.11
4-door Sedan	1121.55	4.50	82.75	1208.80
3-pass. Coupe	1067.51	4.50	79.25	1151.26
Club Coupe	1119.65	4.50	82.75	1206.90
Convertible Brougham	1355.75	4.50	98.50	1458.75
Chassis	845.19	4.50	64.25	913.94
HUDSON COMMODORE SIX (172)				
4-door Sedan	1227.02	4.50	90.25	1321.77
Club Coupe	1223.61	4.50	90.00	1318.11
HUDSON SUPER EIGHT (173)				
4-door Sedan	1198.85	4.50	88.00	1291.35
Club Coupe	1196.09	4.50	87.75	1283.74
Chassis	890.37	4.50	67.25	962.12
HUDSON COMMODORE EIGHT (174)				
4-door Sedan	1277.91	4.50	93.75	1376.16
Club Coupe	1268.36	4.50	23.00	1365.06
Convertible Brougham	1478.27	4.50	107.00	1569.77
HUDSON COMMERCIAL CARS (178)				
Cab Pick-up	970.71	4.50	56.25	1031.46

(OVER)



Car Distribution Department Bulletin

Number DL-30
Date 3-5-47
Subject

- 3 -

(b) In addition to the above a charge of 25 may be included for a certificate of origin (if one is required); a charge may be made for anti-freeze supplied with the car, not to exceed current market prices; a charge of \$10.00 per car may be made for local cooperative advertising in accordance with authorizations given to each distributor by his master distributors; and a report card charge of \$5.00 per car may be made, which will be refunded or credited by the distributor to the master dealer on each of the automobiles sold at retail by the master dealer provided he furnishes; within 5 days after delivery, a Retail Delivery Report properly filled in.

(c) A distributor's charges to his master dealer on any cars delivered to a master dealer out of the distributor's warehouse should not exceed \$10.00 to cover warehousing expense and \$3.50 to cover un-loading and greasing expense. In addition a charge may be made for gasoline, oil and anti-freeze supplied by the distributor with the automobile, not to exceed current market prices.

3. The following are current list and net prices and provision for federal tax expense on optional equipment, as shown in current bulletins. In establishing retail prices the "Provision for Federal Tax Expenses" shown in column 4 may be added to the list prices. Distributor's net prices to master dealers for optional equipment, f.o.b. factory at Detroit, should not exceed the amounts shown in column 5, plus the "Provision for Federal Tax Expense."

(1)	(2)	(3)	(4)	(5)
Option Letter	Option Name	List Price of Option	Provision for Federal Tax (Not Expense)	Maximum Net Price to Master Dealer (Not incl. Tax.)
C	Vacuomotive Drive (ALL Pass.)	\$37.75	\$1.90	\$28.69
C	" " (Comm.)	38.07	1.37	28.93
D	WheelColors (Red or cream)	N/C	-	N/C
E	Fender Lamps (171 a 173)	14.96	.73	11.22
E	" " (178)	15.09	.53	11.32
F	Arm Rest, Extra, Frt.Door (All)	4.11	.20	2.08
L	Drivemaster (All Pass. ex. R.H.D.)	84.20	4.36	64.83
N	Power Dome (Alum.Cyl. Head)			
	(173 & 174)	10.00	.49	7.50
O	Oil Bath Air Cleaner (All Pass.)	3.07	.15	2.30
O	" " " " (Comm.)	3.12	.11	2.34
R	Ft. & Rr. Bumper & Exten.(171 & 173)	19.30	.95	10.48
T	Overdrive (All Pass.)	81.67	4.12	62.07
T	" (Comm.)	82.37	2.57	62.00

2. Net Prices to Master Dealers (Cont'd)

3. Prices of Optional Equipment

(OVER)

	(1)	(2)	(3)	(4)	(5)
3. Prices of Optional Equipment (Cont'd)	Option Letter	Option Name	List Price of Option	Provision for Federal Tax Expense	Maximum Net Price to Master Dealer (Not incl. Tax.)
	U	17" Wheel with Horn Operating Ring (171 & 173)	\$ 5.77	\$.23	\$ 4.33
	U	17" Wheel with Horn Operating Ring (178)	5.82	.20	4.37
	V	Visor - fixed type, extra (171 173)	3.10	.15	2.33
	X	Weathermaster (All Pass.)	45.97	1.70	30.73
	X	" (Commercial)	46.38	1.23	31.02
	Y	Radio (All Pass.)	72.84	3.92	48.90
	Y	" (Commercial)	72.84	3.72	48.90
	W-1	Leather Trim 3/4, - 171 Brougham & Sedan	39.79	2.01	30.24
	"	" " " " - 171 3-Pass. Coupe	29.00	1.46	22.04
	"	" " " " - 171 Club Coupe	35.96	1.81	27.33
	"	" " " " - 172 Sedan	47.46	2.39	36.07
	"	" " " " - 172 Club Coupe	41.64	2.10	31.65
	"	" " " " - 173 Sedan	39.79	2.01	30.24
	"	" " " " - 173 Club Coupe	35.96	1.81	27.33
	"	" " " " - 174 Sedan	47.46	2.39	36.07
	"	" " " " - 174 Club Coupe	41.64	2.10	31.65
	W-4	Leather Grain 3/4 - 171 Brougham & Sedan	32.61	1.64	24.78
	"	" " " " - 171 3-Pass. Coupe	23.85	1.20	18.13
	"	" " " " - 171 Club Coupe	29.49	1.49	22.41
	"	" " " " - 172 Sedan	38.81	1.96	29.50
	"	" " " " - 172 Club Coupe	34.08	1.72	23.90
	"	" " " " - 173 Sedan	32.61	1.64	24.78
	"	" " " " - 173 Club Coupe	29.49	1.49	22.41
	"	" " " " - 174 Sedan	38.81	1.96	29.50
	"	" " " " - 174 Club Coupe	34.08	1.72	23.90
	AA	Full Leather Trim - 171-172 Brougham & Sedan	51.47	2.52	38.60
	"	" " " " - 171 3-Pass. Coupe	36.37	1.78	27.28
	"	" " " " - 171-172 Club Coupe	45.29	2.22	33.97
	"	" " " " - 173-174 Sedan	51.47	2.52	38.60
	"	" " " " - 173-174 Club Coupe	45.29	2.22	33.97
	BB	Twin Air Horns (Comm. Only)	9.69	.34	7.27
	DD	Direction Indicator (171-173)	24.70	1.21	18.53
	DD	" " (172-174)	13.73	.67	10.30
	FF	4-1/9 to 1 Gear Ration	N/C	N/C	N/C
	HH	Combination Fuel/Vacuum Pump (All Pass.)	6.86	.34	5.15
	HH	" " " " (Commercial)	6.92	.24	5.19
	II	Police & Taxicab Clutch, Heavy Rear Chassis Springs, 11" Brakes & Heavy Type Seat Cushion Springs	10.41	.53	7.91
	KK	Steering Wheel 18" (171 & 173)	18.53	.91	13.89
	KK	" " 18" (178)	18.69	.65	14.01
	LL	4-5/9 to 1 Gear Ratio	N/C	--	N/C
	MM	Rubber Cushion Pads, all seats (171 & 173)	16.47	.81	12.35
	NN	Wheel Trim Rings (All)	12.01	.59	9.01
	PP	Vacuum Antenna (All)	8.91	.44	6.68
	UU	Hub Caps - large (171 & 173)	8.91	.44	6.68



Car Distribution Department Bulletin

Number
DL-30

Date
3-5-47

Subject

- 5 -

(1)	(2)	(3)	(4)	(5)
<u>Option Letter</u>	<u>Option Name</u>	<u>List Price of Option</u>	<u>Provision for Federal Tax Expense</u>	<u>Maximum Net Price to Master Dealer (Not incl. Tax.)</u>
VV	Rubber Cushion Pads, Front Seat only (171 & 173)	\$8.23	\$.40	\$ 6.17
VV	Cushion Cushion Pads, Frt Seat only (178)	8.31	.20	6.23
XX	Electric Clock (171 & 173)	13.04	.64	9.78
XX	" " (178)	13.15	.46	9.86
<u>COLOR OPTIONS</u>				
JB	Two-tone Paint, Blue (All Pass.)	17.16	.84	12.87
QK	" " " Grey & Black (All Pass)	17.16	.84	12.87
QG	" " " Grey	17.16	.84	12.87
SP	Two-tone Paint, Green (All Pass)	17.16	.84	12.87
CC	Spec. Paint, Royal Red (" ")	21.50	1.05	16.13
RR	Spec. Paint, Nepal Ivory (" ")	50.90	2.69	41.18
<u>TIRE OPTIONS</u>				
A	5-15 x 6.50 - 4 Ply Tires, including large hub caps over 5-16 x 6.00 - 4 Ply tires (Models 51, 171 & 53, 173)	26.34	1.61	19.76
ATT	5-15 x 6.50 - 6 Ply Tires, including large hub caps over 5-16 x 6.00 - 4 Ply Tires - (Models 51, 171 & 53, 173)	50.20	3.90	37.65
TT	5-16 x 6.00 - 6 Ply Tires, over 5-16 x 6.00 - 4 Ply Tires (Models 51, 171 & 53, 173)	20.00	2.37	15.00
TT	5-15 x 6.60 - 6 Ply Tires, over 5-15 x 6.50 Ply Tires (Models 52, 172 & 54, 174)	23.86	2.29	17.90
EE	5-15 x 7.00 - 4 Ply Tires, including large hub caps over 5-15 x 6.00 - 4 Ply Tires, (Models 51, 171 & 53, 173)	38.99	3.57	29.24
EETT	5-15 x 7.00 - 6 Ply Tires, including large hub caps over 5-16 x 6.00 - 4 Ply Tires (Models 51, 171 & 53, 173)	65.91	6.17	49.43
EETT	5-15 x 7.00 - 6 Ply Tires, over 5-15 x 6.50 - 4 Ply Tires (Models 52, 172 & 54, 174)	39.57	4.56	29.68

3. Prices of
Optional
Equipment
(Cont'd)

3. Prices of
Optional
Equipment
(Cont'd)TIRE SUBSTITUTIONS

When 16" wheels and tires are substituted for 15" wheels and tires, the following f.o.b. factory at Detroit prices are effective:

(1) Description	(2) List Price of Option	(3) Provision for Federal Tax Expense	(4) Maximum Net Price to Master Dlr. (Not Incl. Tax
5-16 x 6.50 - 6 ply Tires, Wheels & 4 Hub Caps, over 5-16 x 6.00 - 4 Ply Tires (171-173)	\$44.15	\$4.41	\$33.11
5-16 x 6.50 - 4 Ply Tires, Wheels & 4 Hub Caps, over 5-16 x 6.50 - 4 Ply Tires (172-174)	3.75	.83	2.81
5-16 x 6.50 - 6 Ply Tires, Wheels & 4 Hub Caps, over 5-15 x 6.50 - 4 Ply Tires (172-174)	26.71	3.24	20.03

4. Advertis-
ing Charge

4. See sub-paragraph (b) in section 2 above.

5. Changes in
Prices, etc.

5. All prices in this bulletin are subject to change as provided in the Supplement to your Hudson Distributor-Master Dealer Sales Agreement, which Supplement bears Form #10996.

A separate bulletin will be issued containing information from current bulletins in regard to volume discounts, etc.

GHD:LB.

Geo. H. Dow
Manager
Car Distribution,



Car Distribution Department Bulletin

Number DL-31
Date 3-11-47
Subject Option "Z" Front Bumpers for Model 178 Cab Pickup

TO ALL MASTER DEALERS:

Model 171-173 type of Front Bumpers and Bumper Guards are now available for installation on the Model 178 Cab Pickup. Designate as option "Z" (Please refer to our letter of March 6, 1947).

Prices are as follows:

(1) Option Letter Option Name	(2)	(3) List Price of Option**	(4) Provision for Federal Tax Expense	(5) Maximum Net Price to Master Dlr.** (Not incl. Tax)
"Z" Model 171-173 Front Bumpers and Guards for Model 178 Cab Pickup.		\$8.40	\$.29	\$6.30

** In establishing retail prices and master dealer net prices, the "Provision for Federal Tax Expense" should be added to prices shown in columns (3) and (5) respectively.

Geo. H. Dow
Manager,
Car Distribution.

GHD:LB.



Car Distribution Department Bulletin

Number
DL-33

Date
4-9-47

Subject

TO ALL MASTER DEALERS:

1. Effective on all cars shipped or delivered from the factory on and after April 3, 1947 the following are the established f.o.b. factory at Detroit list prices and factory delivery charges:

<u>Model Body Type</u>	<u>Car List</u>	<u>Factory Delivery Including Provision For Federal Tax Expense</u>
HUDSON SUPER SIX (171)		
Brougham	\$1493.00	\$ 91.00
4-door Sedan	1536.00	93.25
3-Pass. Coupe	1421.00	87.25
Club Coupe	1531.00	93.25
Chassis	1155.00	72.75
HUDSON COMMODORE SIX (172)		
4-door Sedan	1675.00	101.00
Club Coupe	1667.00	100.25
HUDSON SUPER EIGHT (173)		
4-door Sedan	1638.00	98.50
Club Coupe	1632.00	98.00
Chassis	1215.00	75.75
HUDSON COMMODORE (174)		
4-door Sedan	1742.00	104.50
Club Coupe	1726.00	103.50

Prices of Convertible and Cab Pickups will be announced later.

PRICES OF
CARS AND
OPTIONS
1947 MODELS

1. List
Prices,
Cars.

(OVER)

1. List
Prices,
Cars.
(Cont'd)

Retail delivered prices should not exceed the sum of the following items:

- List price of car
- Optional equipment
- Factory Delivery charge including provision for federal tax expense
- Actual transportation cost
- State and local taxes
- Dealer conditioning charge
 - \$20.00 on six cylinder models
 - \$25.00 on eight cylinder models
 - \$20.00 on commercial cars
- Gasoline, oil and anti-freeze.

2. Net
Prices
to
Master
Dealer

2. (a) Effective on and after April, 3, 1947 a distributor's net price to his master dealers, f.o.b. factory at Detroit, for Hudson cars with standard equipment, should not exceed the "Combined Net Price to Master Dealer at Factory" shown below, plus applicable charges referred to in sub-paragraph (b) of this section.

<u>Model and Body Type</u>	<u>Net Price of Car</u>	<u>Factory Delivery including Provision For Federal tax expense</u>	<u>Combined Net Price to Master Dealer at Factory</u>
HUDSON SUPER SIX (171)			
Brougham	\$1141.00	\$ 91.00	\$1232.16
4-door Sedan	1173.00	93.25	1267.09
3-pass. Coupe	1086.44	87.25	1173.69
Club Coupe	1170.28	93.25	1263.53
Chassis	834.28	72.75	957.03
HUDSON COMMODORE SIX (172)			
4-door Sedan	1279.72	101.00	1380.72
Club Coupe	12173.40	100.25	1373.65
HUDSON SUPER EIGHT (173)			
4-door Sedan	1251.60	98.50	1350.10
Club Coupe	1247.04	98.00	1345.04
Chassis	930.12	75.75	1005.87
HUDSON COMMODORE EIGHT (174)			
4-door Sedan	1330.64	104.50	1435.14
Club Coupe	1318.24	103.50	1421.74



Car Distribution Department Bulletin

Number

DL-33-

Date

4-9-47

Subject

- 3 -

(b) In addition to the above a. charge of 25¢ may be included for a certificate of origin (if one is required); a charge may be made for anti-freeze supplied with the car, not to exceed current market prices; a charge of \$10.00 per car may be made for local cooperative advertising in accordance with authorizations given to each distributor by his master dealers; and a report card charge of \$5.00 per car may be made which will be refunded or credited by the distributor to the master dealer on each of the automobiles sold at retail by the master dealer provided he furnishes within 5 days after delivery, a Delivery Report properly filled in.

(c) A distributor's charges to his master dealers on any cars delivered to a master dealer out of the distributors warehouse should not exceed \$10.00 to cover warehousing expense and \$3.50 to cover unloading and greasing expense. In addition a charge may be made for gasoline, oil and anti-freeze supplied by the distributor with the automobile, not to exceed current market prices.

3. Effective April 3, 1947 the prices of the options listed below will be as follows:

- (1) (2) (3) (4) (5)

<u>Option Letter</u>	<u>Option Name</u>	<u>List Price Option*</u>	<u>Provision for Federal Tax Expense</u>	<u>Maximum Net Price to Master Dealer* (Not Including Tax)</u>
L	Drivemaster (All Pass. exc. R.H.D.)	\$93.25	\$4.83	\$71.80
T	Overdrive (All Pass.)	83.50	4.21	63.46
X	Weather Master (All Pass.)	48.00	1.84	32.76
W-1	Leather Trim 3/4, 171 Bro. & Sed.	42.50	2.14	32.30
"	" " " " 171 3-pass. Coupe	30.50	1.53	23.18
"	" " " " 172 Sedan	40.00	2.52	38.00
"	" " " " 172 Club Coupe	44.50	2.24	33.82
"	" " " " 173 Sedan	42.50	2.14	32.30
"	" " " " 173 Club Coupe	38.50	1.94	29.26
"	" " " " 174 Sedan	50.00	2.52	38.00
"	" " " " 174 Club Coupe	44.50	2.24	33.82
AA	Full Leather Trim 171-172 Bro.& Sed.	75.00	3.68	56.25
AA	" " " " 171 3-pass. Coupe	57.50	2.82	43.13
AA	" " " " 171-172 Club Coupe	71.50	3.50	53.63
AA	" " " " 173-174 Sedan	75.00	3.68	55.25
AA	" " " " 173-174 Club Coupe	71.50	3.50	53.63

2. Net Prices to Master Dealer (Cont'd)

3. Prices of Optional Equipment

Subject

- 4 -

3. Prices of
Optional
Equipment
(Cont'd)

* In establishing retail prices the "Provision for Federal Tax Expense" shown in column 4 may be added to the list prices. Distributor's net prices to master dealers for optional equipment, f.o.b. factory at Detroit, should not exceed the amounts shown in column 5, plus the "Provision for Federal Tax Expense."

Prices of all other options remain the same as shown in current bulletins.

4. Advertising
Charge.

4. See sub-paragraph (b) in Section 2 above.

5. Change in
Prices, etc.

5. All prices in this bulletin are subject to change as provided in the Supplement to your Hudson Distributor-Master Dealer Sales Agreement, which Supplement bears Form #10996.

A separate bulletin will be issued covering volume discounts.

GHD.LB

Geo. H. Dow
Manager,
Car Distribution.



Car Distribution Department Bulletin

Number
DL-35

Date
4-9-47

Subject
NEW PRICES
ON CON-
VERTIBLES
AND CAB
PICKUPS

TO ALL MASTER DEALERS:

In Bulletin DL-33 of April 9, 1947, advising you of new prices effective on cars shipped from the factory on and after April 3, 1947, we omitted new prices on Convertibles and Cab Pickups and advised you these prices would be given you later.

1. Effective on all Convertible Broughams and Cab Pickups shipped or delivered from the factory on and after April 18, 1947, the following are the established f.o.b. factory at Detroit list prices and factory delivery charges:

Model and Body Type expense	Car List	Factory Delivery Including Provision for Federal Tax Ex-
171 Convertible Brougham	\$1844.00	\$109.75
174 Convertible Brougham	2005.00	118.50
178 Cab Pickup	1338.00	64.75

Retail delivered prices should not exceed the sum of the following items:

- List price of car
- Optional equipment
- Factory delivery charge
- Actual transportation cost
- State and local taxes
- Dealer conditioning charge
 - \$20.00 on six cylinder models
 - \$25.00 on eight cylinder models
 - \$20.00 on commercial cars
- Gasoline, oil and anti-freeze.

2. (a) Effective on and after April 18, 1947 a distributor's net prices to his master dealers f.o.b. factory at Detroit, for Hudson Convertible and Cab Pickup models with standard equipment, should not exceed the "Combined Net Price to Master Dealer at Factory" shown below, plus applicable charges referred to in sub-paragraph (b) of this section.

Model and Body Type A)	Net Price of Car	Factory Delivery Including Provision for Federal Tax Expense (Note B)	Combined Net Price to Distributor at Factory (Note
171 Convertible Brougham	\$1407.92	\$109.75	\$1517.67
174 Convertible Brougham	1530.28	118.50	1648.78
178 Cab Pickup	1023.60	64.75	1038.35

1. List
Prices,
Cars.

2. Net
prices
to
Master
Dealer

(b.) All other charges as shown in paragraphs (b) and (c) of Section 2 of Bulletin DL-33 are also applicable to Convertibles and Cab Pickup.

3. Prices on optional equipment or Convertibles are as shown in Bulletin DL-33. Effective April 28, 1947, the prices of optional equipment listed below on Cab Pickups will be as follows:

(1)	(2)	(3)	(4)	(5)
<u>Option Letter</u>	<u>Option Name</u>	<u>List Price Option*</u>	<u>Provision for Federal Tax Expense</u>	<u>Maximum Net Price to Master Dealer* (Not Including Tax)</u>
C	Vacumotive Drive	\$37.75	\$1.36	\$23.69
E	Fender Lamps	14.96	.52	11.22
L	Drivemaster	93.25	3.45	71.80
O	Oil Bath Air Cleaner	3.07	.11	2.30
T	Overdrive	83.50	3.01	63.46
U	17" Wheel with Horn Operating Ring	5.77	.20	4.33
X	Weathermaster	48.00	1.32	32.76
Z	171 Front Bumper & Guards on 178	8.40	.29	6.30
BB	Twin Air Horns	9.69	.34	7.27
DD	Direction Indicator	24.70	.86	18.53
HH	Comb. Fuel & Vac. Pump	16.86	.24	5.15
KK	Steering Wheel 18"	18.53	.65	13.89
VV	Rubber Cushion Pads, Front Seat Only	8.23	.29	6.17
XX	Electric Clock	13.04	.46	9.78

* In establishing retail prices the "Provision for Federal Tax Expense" shown in column 4 may be added to the list prices. Distributors net prices to master dealers for optional equipment, f.o.b. factory at Detroit, should not exceed the amounts shown in column 5, plus the "Provision for Federal Tax Expense."

4. Bulletin DL-32 outlined the arrangements under which Hudson will allow volume discount to master dealers. Subject to the conditions contained in that bulletin, volume discount to be paid on Convertibles and Cab Pickups shipped or delivered from from the factory on and after April 18, 194-17 and until further notice be computed on the following amounts (instead of on the amounts shown in Column 4 of Section (b) of that bulletin.) For convenient reference it is recommended that these amounts be inserted in Bulletin DL-32 in a new column (6) on page 2, with the heading "On and after April 18, 1947".

<u>Model and Body Type</u>	<u>Base Amount</u>
171 Convertible Brougham	\$ 1817.00
174 Convertible Brougham	1978.00
178 Cab Pickup	1310.00



Car Distribution Department Bulletin

Number
DL-35

Date
4-25-47

Subject

- 3 -

5. All prices, charges and discounts in this bulletin are subject to change as provided in the Supplement to your Hudson Distributor-Master Dealer Sales Agreement, which Supplement bears Form #10996.

G. H. Dow
Manager
Car Distribution.
GHD:LB

5. Change
in
Prices,
etc.



Car Distribution Department Bulletin

Number
DL-37

Date
4-30-47

Subject

WHITE
SIDE WALL
TIRES

TO ALL MASTER DEALERS:

White Side Wall Tires, as listed below, will be available in production approximately the first week in June 1947.

Prices are as follows:

(1)	(2)	(3)	(4)	(5)
<u>Option Letter</u>	<u>Option Name</u>	<u>List Price of Option*</u>	<u>Provision For Federal Tax Expense</u>	<u>Maximum Net Price to Master Dealer* (Not inc. Tax.)</u>
WW	5-16 x 6.00 - 4-Ply White sidewall Tires over 5-15 x 600 - 4-Ply Black (Models 171 & 173)	\$12.07	\$.59	\$ 9.05
TTWW	5-16 x 600 - 6-Ply W.S.W. Tires over 5-16 x 600 - 4-Ply Blk. (171 & 173)	35.00	3.06	26.25
AWW	5-15 x 6.50 - 4-Ply W.S.W. Tires over 5-16 x 6.00 - 4-Ply Black (including 4 Large Hub Caps) (171 & 173)	40.70	2.70	30.53
ATTWW	5-15 x 6.50 - 6-Ply W.S.W. Tires over 5-16 x 6.00 - 4-Ply Black (including 4 Large Hub Caps) (171 & 173)	68.20	4.89	51.15
EEWW	5-15 x 7.00 - 4-Ply W.S.W. Tires over 5-16 x 6.00 - 4-Ply Black (including 4 Large Hub Caps) (171 & 173)	55.27	4.32	41.45
EETTWW	15-15 x 7.00 - 6-Ply W.S.W. Tires over 5-16 x 6.00 - 4-Ply Black (including Large Hub Caps) (171 & 173)	86.06	6.79	64.55
WW	5-15 x 6.50 - 4-Ply W.S.W. Tires over 5-15 x 6.50 - 4-Ply Blk. (172 & 174)	14.14	.69	10.61
TTWW	5-15 x 6.50 - 6-Ply W.S.W. Tires over 4-14x 6.50 - 4 Ply Black (172 & 174)	41.64	2.90	31.23
EEWW	5-15 x 7.00 - 4-Ply Tires over 5-15 x 6.50 - 4-Ply Blk. (172 & 174)	28.71	2.32	21.53
EETTWW	5-15 x 7.00 - 6-Ply W.S.W. Tires over 5-15 x 6.50 - 4-Ply Blk. (172 & 174)	59.50	4.79	44.63

(OVER)

Subject

- 2 -

* In establishing retail prices and master dealer net prices, the "Provision for Federal Tax Expenses should be added to columns (3) and (5) respectively.

All prices in this bulletin are subject to change as provided in the Supplement to your Hudson Distributor-Master Dealer Sales Agreement, which Supplement bears Form #10996.

GHD:LB.

Geo. H. Dov
Manager,
Car Distribution



Car Distribution Department Bulletin

Number
DL-38

Date
5-22-47

Subject

Correction
Bulletin
DL-37

WHITE
SIDEWALL
TIRES

TO ALL MASTER DEALERS:

Item 4 - "ATTWT" in Bulletin DL-37 shows 5-15 x 6-50 6-Ply W.S.W. Tires over 5-15x6.50 4-Ply Blk. This should read 5-15 x 6.50 - 6-Ply W.S.W. Tires over 5-16 x 6.00 - 4-Ply Black.

Please correct your copy to read as follows:

(1)	(2)	(3)	(4)	(5)
Option Letter	Option Name	List Price of Option*	Provision for Federal Tax Federal Tax Expense	Maximum Net Price to Master Dealer* (Not including Tax)
ATTWW	5-15 x 6.50 - 6-Ply W.S.W.Tires over 5-16 x 6.00 - 4-Ply Black (including 4 Large Hub Caps) (171 & 173)	\$68.20	\$4.89	\$51.15

GHD:LB.

Geo. H. Dow
Manager,
Car Distribution.



Car Distribution Department Bulletin

Number
DL-39

Date
5-26-47

Subject

NEW
BLUE
COLORS

TO ALL MASTER DEALERS:

Effective with cars built on and after May 23, 1947, new blue colors will be used as follows:

Option	Color Name
B	Belvedere Blue (dark)
J	Jefferson Blue (light)
JB	Two-tone, Belvedere Blue - upper Jefferson Blue - lower.

These new colors are brighter and lend more contrast in the two-tone combinations.

Prices of the two-tone option "JB" remain the same as listed in Bulletin DL-30.

GHD:LB.

G. H. Dow
Manager
Car Distribution



Car Distribution Department Bulletin

Number DL-41
Date 6-30-47
Subject WHITE SIDE WALL TIRES.

TO ALL MASTER DEALERS:

Effective on all passenger cars shipped on and after July 1, 1947, the following are the new prices f.o.b. Factory at Detroit, Mich., for White Sidewall Tires, Option "WW", installed as optional equipment:

(1)	(2)	(3)	(4)	(5)
<u>Option Letter</u>	<u>Option Name</u>	<u>List Price of Option*</u>	<u>Provision For Federal Tax Expense</u>	<u>Maximum Net Price to Master Dealer* (Not inc. Tax.)</u>
WW	5-16 x 600 - 4-Ply White Sidewall Tires over 5-15 x 600 - 4-Ply Black (Models 171 & 173)	\$13.50	\$.66	\$10.13
TTWW	5-16 x 600 - 6-Ply W.S.W. Tires over 5-16 x 600 - 4-Ply Black (171 & 173)	40.07	3.30	30.05
AWW	5-15 x 650 - 4-Ply W.S.W. Tires over 5-16 x 600 - 4-Ply Black (including 4 Large Hub Caps) (171 & 173)	39.45	2.63	29.59
ATTWW	5-15 x 6.50 - 6-Ply W.S.W. Tires over 5-16 x 6.00 - 4-Ply Black (including 4 Large Hub Caps) (171 & 173)	71.01	5.03	53.26
EEWW	5-15 x 7.00 - 4-Ply W.S.W. Tires over 5-16 x 6.00 - 4-Ply Black (including 4 Large Hub Caps) (171 & 173)	54.37	4.27	40.78
EETTWW	15-15 x 7.00 - 6-Ply W.S.W. Tires over 5-16 x 6.00 - 4-Ply Black (including Large Hub Caps) (171 & 173)	90.23	6.99	67.67
WW	5-15 x 6.50 - 4-Ply W.S.W. Tires over 5-15 x 6.50 - 4-Ply Black (172 & 174)	15.64	.77	11.73
TTWW	5-15 x 6.50 - 6-Ply W.S.W. Tires over 5-15 x 6.50 - 4 Ply Black (172 & 174)	47.21	3.17	35.41
EEWW	5-15 x 7.00 - 4-Ply Tires over 5-15 x 6.50 - 4-Ply Black (172 & 174)	30.57	2.41	22.93
EETTWW	5-15 x 7.00 - 6-Ply W.S.W. Tires over 5-15 x 6.50 - 4-Ply Black (172 & 174)	66.43	5.13	49.82

(OVER)

In establishing retail prices and master dealer net prices, the "Provision for Federal Tax Expense" should be added to columns (3) and (5) respectively.

All prices in this bulletin are subject to change as provided in the Supplement to your Hudson-Distributor-Master Dealer Sales Agreement, which Supplement bears Form #11171.

GHD:LB.

Geo. H. Dow
Manager,
Car Distribution



Car Distribution Department Bulletin

Number
DL-42

Date
8-12-47

Subject

PRICES OF
CARS AND
OPTIONS
1947 MODELS

1. List
Prices,
Cars.

TO ALL MASTER DEALERS:

1. Effective on all cars shipped or delivered from the factory on and after August 11, 1947 the following are the established f.o.b. factory at Detroit list prices and factory delivery charges:

<u>Model & Body Type</u>	<u>Car List</u>	<u>Factory Delivery Including Provision For Fed- eral Tax Expense</u>
HUDSON SUPER SIX (171)		
Brougham	\$ 1588.00	\$ 96.00
4-door Sedan	1631.00	98.25
3-Pass. Coupe	1516.00	92.25
Club Coupe	1626.00	98.25
Convertible Brougham	1889.00	112.25
Chassis	1250.00	77.75
HUDSON COMMODORE SIX (172)		
4-door Sedan	1770.00	106.00
Club Coupe	1762.00	105.25
HUDSON SUPER EIGHT (173)		
4-door Sedan	1733.00	103.50
Club Coupe	1727.00	103.00
Chassis	1310.00	80.75
HUDSON COMMODORE LIGHT (174)		
4-door Sedan	1837.00	109.50
Club Coupe	1821.00	108.50
Convertible Brougham	2050.00	121.00
HUDSON COMMERCIAL CAR (178)		
Cab Pick-up	1433.00	68.50

(OVER)

Retail delivered prices should not exceed the sum of the following items:

List price of car
 Optional equipment
 Factory delivery charge
 Including provision for federal tax expense
 Actual transportation cost
 State and local taxes
 Dealer conditioning charge -
 \$20.00 on six cylinder models
 \$25.00 on eight cylinder models
 \$20.00 on commercial oars
 Gasoline, oil and anti-freeze.

2. @ Effective on and after August 11, 1.947 a distributor's net prices 'to his master dealers, f.o.b. factory at Detroit, for Hudson cars with standard equipment, should not exceed the "Combined Not Price to Master Dealer at Factory" shown plus applicable charges referred to in sub-paragraph (b) of this section.

<u>Model and Body Type</u>	<u>Net Price of Car</u>	<u>Factory Delivery Including Provision For Fed- eral tax Expense</u>	<u>Combined Net Price to Master Dealer at Factory</u>
HUDSON SUPER SIX (171)			
Brougham	\$1213.36	\$ 96.00	\$1309.36
4-door Sedan	1246.04	98.25	1344.29
3-pass. Coupe	1158.64	92.25	1250.89
Club Coupe	1242.48	98.25	1340.73
Convertible Brougham	1442.12	112.25	1554.37
Chassis	956.48	77.75	1034.23
HUDSON COMMODORE SIX (172)			
4-door Sedan	1351.92	106.00	1457.92
Club Coupe	1345.60	105.25	1450.85
HUDSON SUPER EIGHT (173)			
4-door Sedan	1323.80	103.50	1427.30
Club Coupe	1319.24	103.00	1422.24
Chassis	1002.32	80.75	1033.07
HUDSON COMMODORE EIGHT (1174)			
4-door Sedan	1402.84	109.50	1512.34
Club Coupe	1390.44	108.50	1498.94
Convertible Brougham	1564.48	121.00	1685.48
HUDSON COMMERCIAL CARS (178)			
Cab Pickup	1095.80	68.50	1164.30



Car Distribution Department Bulletin

Number
DL-42

Date
8-12-47

Subject

- 3 -

(b) In addition to the above a charge of 25¢ may be included for a certificate of origin (if one is required); a charge may be made for anti-freeze supplied with the car, not to exceed current market prices; a charge of \$10.00 per car may be made for local cooperative advertising in accordance with authorizations given to each distributor by his master dealers; and a report card charge of \$5.00 per car may be made, which will be refunded or credited by the distributor, to the master dealer on each of the automobiles sold at retail by the master dealer provided he furnishes, within 5 days after delivery, a Retail Delivery Report properly filled in.

(c) A distributor's charges to his master dealers on any cars delivered to a master dealer out of the distributor's warehouse should not exceed \$10.00 to cover warehousing expense and \$3.50 to cover unloading and greasing expense. In addition a charge may be made for gasoline, oil and anti-freeze supplied by the distributor with the automobile, not to exceed current market prices.

3. Prices of optional equipment remain the same as shown in current bulletins.

4. See sub-paragraph (b) in Section 2 above.

5. All prices in this bulletin are subject to change as provided in the Supplement to your Hudson Distributor-Master Dealer Sales Agreement.

A separate bulletin will be issued covering volume discounts.

Geo. H. Dow
Manager,
Car Distribution.

GHD:LB

2. Net
Prices
to
Master
Dealer
(Cont'd)

3. Prices
of Optional
Equipment

4. Advertis-
Charge

5. Change In
Prices, etc.